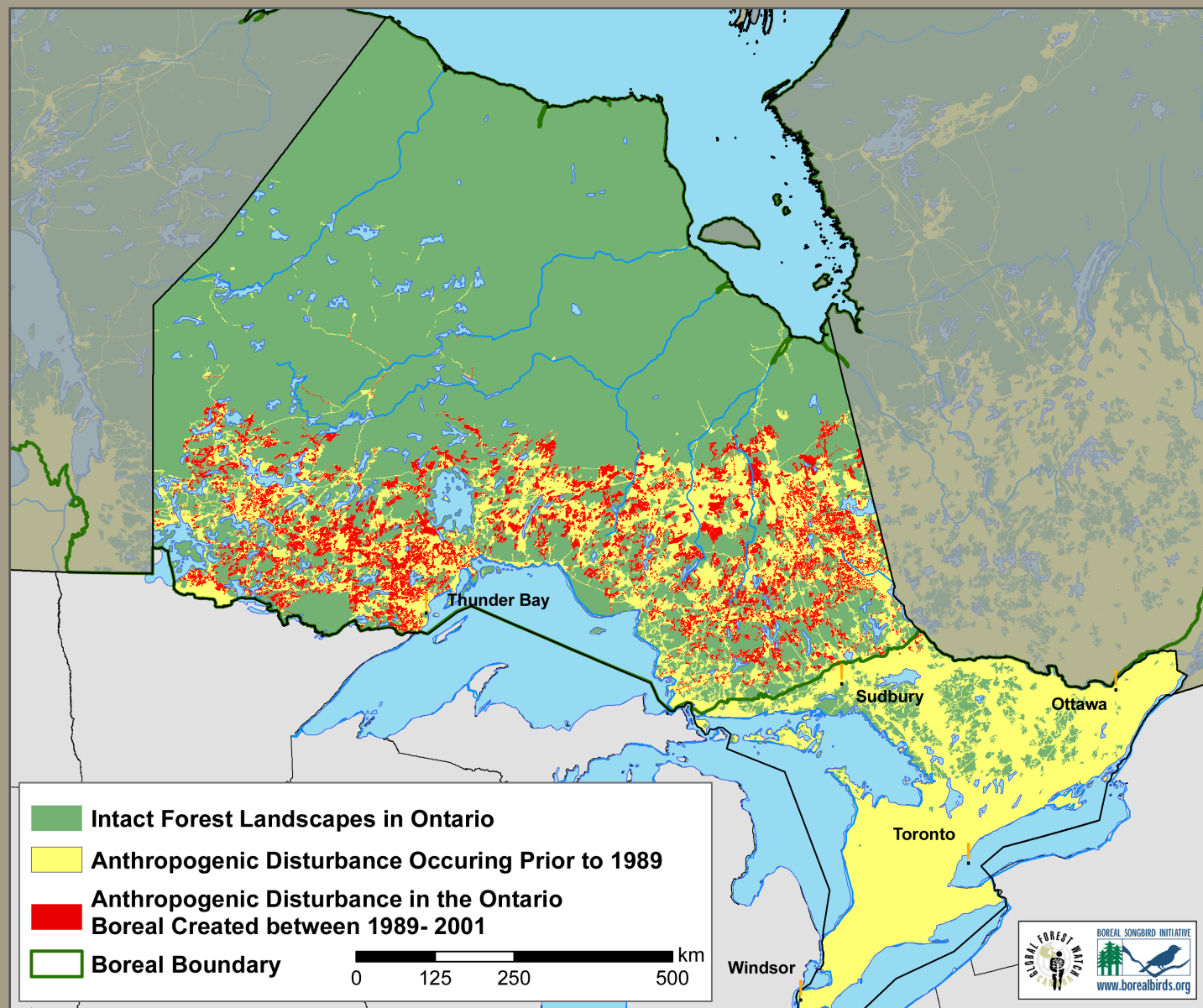


Human Disturbances in Ontario's Boreal Forest



Anthropogenic Disturbance

All changes or disturbances caused by humans, including (but not limited to): clearcut logging, salvage logging in burned areas, road building, reservoir construction, agricultural clearing, and petroleum and natural gas exploration and development. For the 1990-2001 time period, the anthropogenic changes are displayed with a 0.1 point outline to ensure that those changes are represented at this scale.

Intact Forest Landscape

A contiguous mosaic of naturally occurring ecosystems in a forest ecozone, essentially undisturbed by significant human influence. An intact forest landscape does not necessarily consist of old growth trees and may not even be entirely forested. Intact forest landscapes consist of a mosaic of natural ecosystems including forest, bog, water, tundra, and rock outcrops.